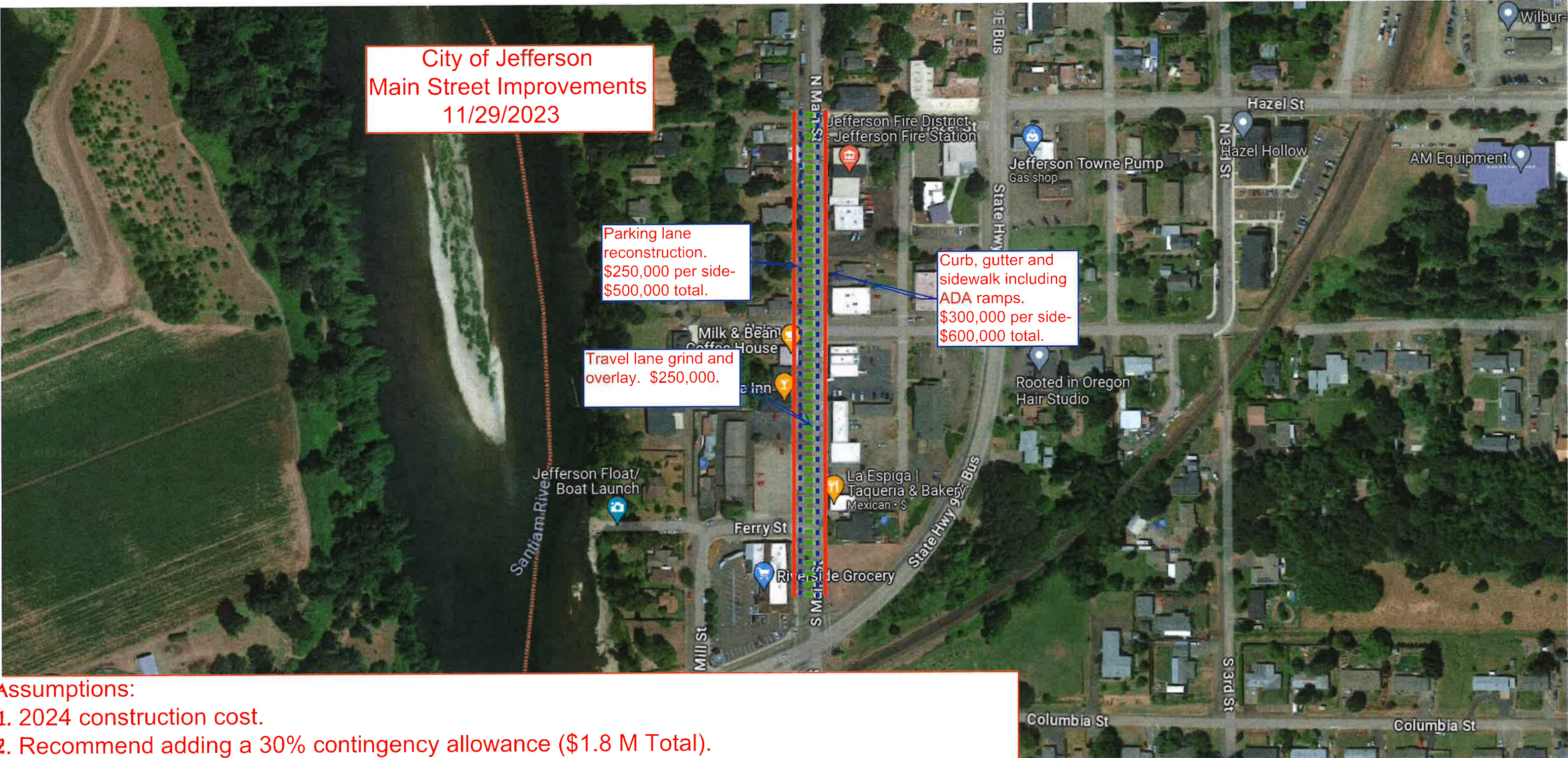


City of Jefferson
Main Street Improvements
11/29/2023



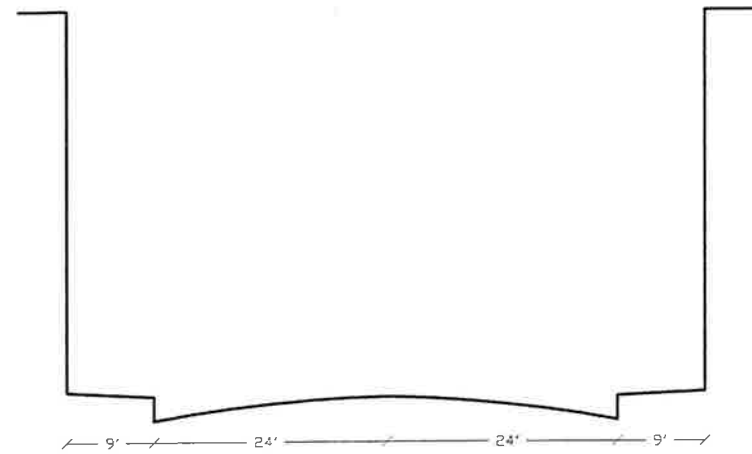
Parking lane reconstruction.
\$250,000 per side-
\$500,000 total.

Travel lane grind and overlay. \$250,000.

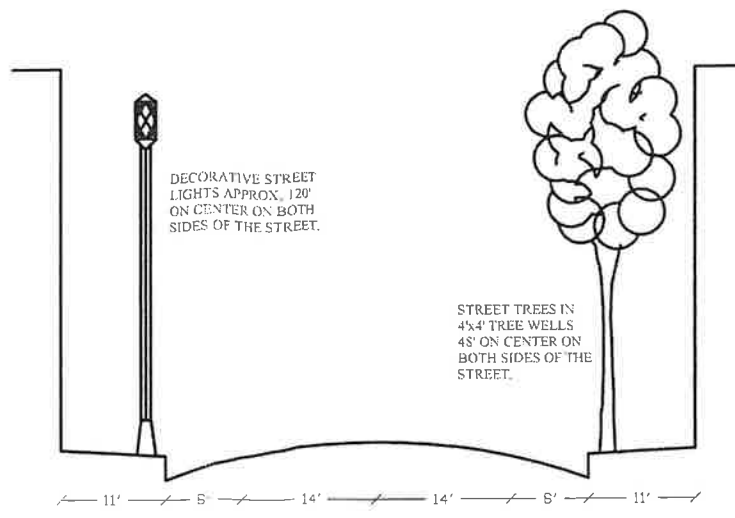
Curb, gutter and sidewalk including ADA ramps.
\$300,000 per side-
\$600,000 total.

Assumptions:

1. 2024 construction cost.
2. Recommend adding a 30% contingency allowance (\$1.8 M Total).
3. Assumes the existing travel lanes are suitable for grind and overlay.
4. No utility improvements required.
5. Power remains overhead.
6. Estimates do not include Streetscape improvements.
7. You cannot reconstruct the parking strips without reconstructing the curbs and sidewalks.



EXISTING STREET



PROPOSED STREET

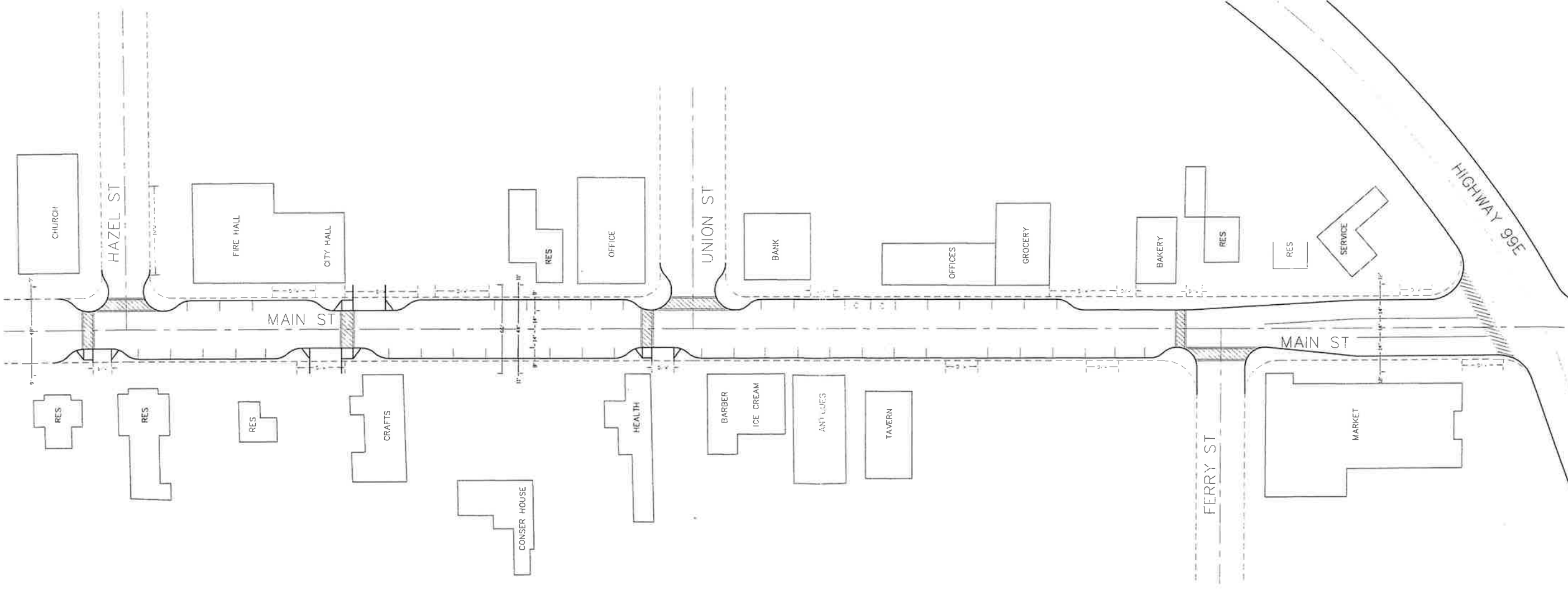
DECORATIVE STREET LIGHTS APPROX. 120' ON CENTER ON BOTH SIDES OF THE STREET.

STREET TREES IN 4 1/2' TREE WELLS 48' ON CENTER ON BOTH SIDES OF THE STREET.



0 20 40 80
(feet)

CITY OF JEFFERSON
MAIN STREET STREETScape
CONCEPT PLAN
NOVEMBER 22, 2000



| NO. | DATE | DESCRIPTION | BY |
|-----|------|-------------|----|
| 1 | | | |

VERIFY SCALE
BAR IS ONE INCH ON ORIGINAL DRAWING
ALL DIMENSIONS SHALL BE ACCORDING TO SCALE UNLESS OTHERWISE NOTED

DSN. RCE
DRN. RCE
CHKD. SAW
DATE NOV '00

WE
WESTTECH ENGINEERING, INC.
CONSULTING ENGINEERS AND PLANNERS

3841 Fairview Industrial Dr. S.E., Suite 100, Salem, OR 97302
Phone: (503) 595-2474 Fax: (503) 585-3986
E-mail: westtech@westtech-eng.com

City of Jefferson
Main Street Streetscape
Preliminary Layout
Parallel Parking Plan

SHEET
1 OF 1
JOB NUMBER
949.000.0